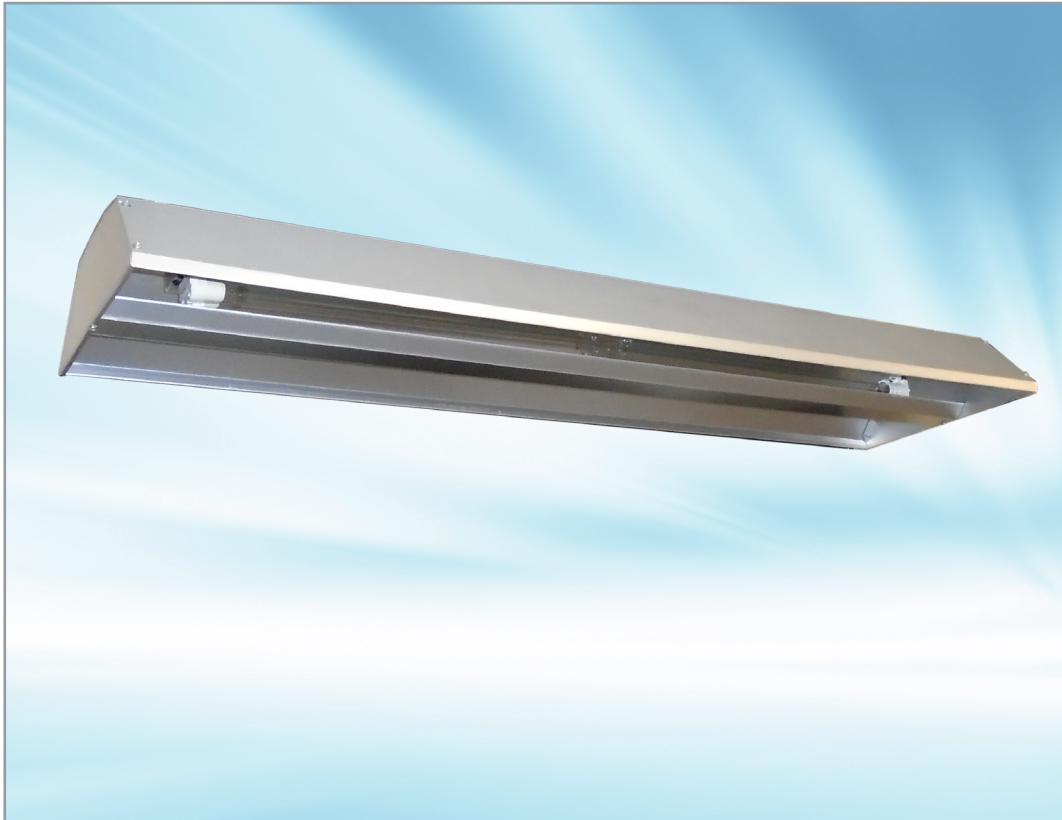




Maintenance • Service • Safety

Recommendations For Lumalier BLU Series Air & Surface UVC Fixtures



1931 Thomas Road | Memphis TN 38134 | 901-800-1709
EPA EST. NO. 91347-TN-002

Maintenance

Scheduled Maintenance Procedures

Quarterly – Visually inspect lamps through a viewing window to ensure all lamps are operational.

Semi-Annually – If the lamps show visual dust accumulation, they should be cleaned.

To clean lamps:

- De-energize by switching the toggle switch to the “off” position.
- Remove the chrome mesh lamp guard.
- Using soft cotton gloves, remove the lamps from the UVC unit.
- Wipe lamps with a soft cotton cloth and isopropyl alcohol; allow to dry.
- Replace the lamps.
- Reinstall the chrome mesh lamp guard.
- Turn on the exterior toggle switch. Read warnings.
- Inspect the lamps through a viewing window to ensure all lamps are energized.

Annually – Replace the lamps.

To replace lamps:

- De-energize by switching the toggle switch to the “off” position.
- Remove the chrome mesh lamp guard.
- Remove the used lamps from the UVC unit.
- Wearing soft cotton gloves, wipe new lamps with a soft cotton cloth and isopropyl alcohol; allow to dry.
- Install the new lamps.
- Turn on the exterior toggle switch.
- Inspect the lamps through the viewing port to ensure all lamps are energized.

Service

Lumalier replacement parts and lamps can be purchased from authorized distributors.

For information call 901-800-1709.

Safety

Personal Protective Equipment

Employees must wear personal protective equipment whenever UVC irradiation measurements are being made close to the lamp source in order to document lamp output, or when maintenance procedures must be performed in areas where UVC systems are activated. Personal Protection Equipment includes:

- Safety glasses with side shields
- Head, neck and face covering opaque to UVC irradiation
- Soft cotton gloves
- Long-sleeved, tightly woven fabrics with SPF 15 or greater

Reporting UV Exposure

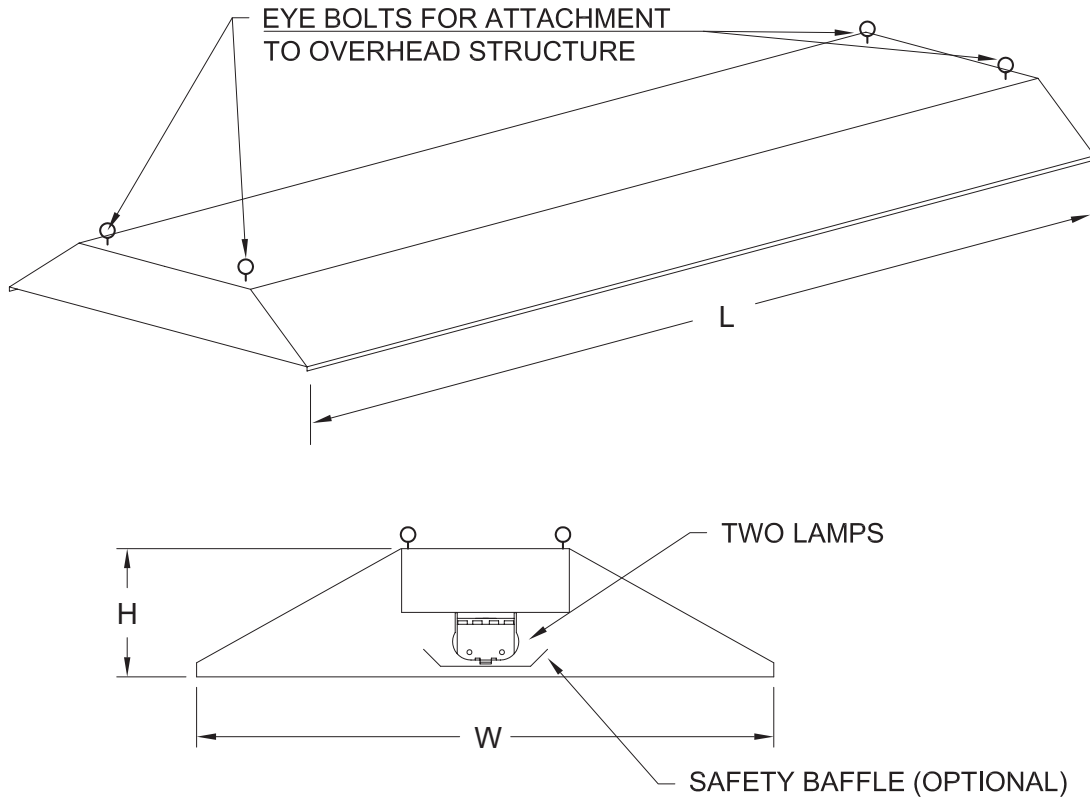
If temporary eye or skin irritation develops after acute exposure to UVC irradiation, contact your supervisor and/or physician.

Material Safety Data Sheets (MSDS)

For MSDS sheets on our lamps, please contact your local Lumalier representative.

DATA SHEET

BLU-260, BLU-460, BLU-295, BLU-495



Model	Nominal Wattage	Description	L	W	H	Electrical Requirements
BLU-260	60W (2)	Two 60W down-facing lamps, recess-mounted with open-grid cover, ceiling mount into unoccupied open areas.	36"	14"	4.5"	120V/50-60Hz/1.3A
BLU-295	95W (2)	Two 95W down-facing lamps, recess-mounted with open-grid cover, ceiling mount into unoccupied open areas.	36"	14"	4.5"	120V/50-60Hz/1.3A
BLU-460	60W (4)	Four 60W down-facing lamps, recess-mounted with open-grid cover, ceiling mount into unoccupied open areas.	48"	14"	4.5"	120V/50-60Hz/1.3A
BLU-495	95W (4)	Four 95W down-facing lamps, recess-mounted with open-grid cover, ceiling mount into unoccupied open areas.	48"	14"	4.5"	120V/50-60Hz/1.3A

MINIMUM CEILING HEIGHT: 10'-0" & CAN BE FLUSH-MOUNTED IN A 2 x 4 SUSPENDED CEILING

BLU SERIES INSTALLATION INSTRUCTIONS

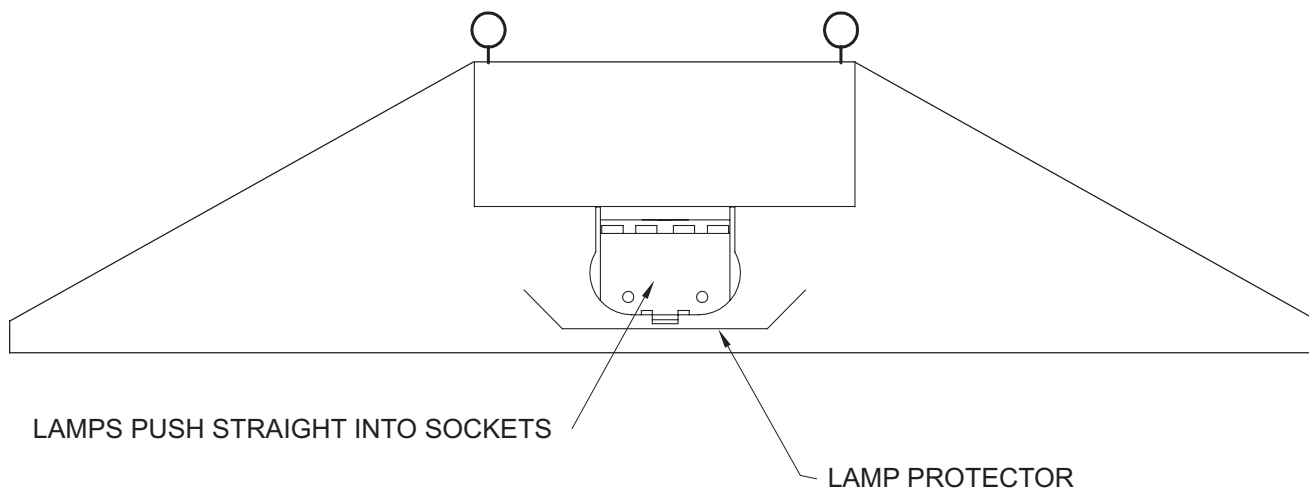
Risk of exposure to excessive ultraviolet-C (UVC) irradiation – Do not operate without complete lamp enclosure in place.

This fixture is designed for use with UVC lamps and must be installed in compliance with competent technical directions so that user's eyes and bare skin will not be subjected to injurious rays.

WARNING: Eye damage may result from directly viewing the light produced by these lamps. To reduce the risk of exposure to UVC irradiation, take UVC irradiation protective measures for personnel during servicing.

WARNING: Do not mount in direct line-of-sight of adjacent wiring or nonmetallic materials.

1. Disconnect power to fixture location. Be sure that the mounting structure will safely support the weight of the entire fixture so that no immediate or future damage will occur to persons or property. All work to be performed by a licensed electrician & in accordance with the National Electrical Code, local codes, & facility codes.
2. Use the eye-bolts on fixture top to use cables to attach to overhead structure and then lay the fixture into a suspended ceiling grid.
3. This fixture is damp location ONLY and 120V ONLY. Make-up wiring connections. Fixture wiring color code is: black = hot, white = neutral, green = ground.
4. If a cord and plug is supplied on this fixture, a grounded ceiling outlet must be installed.
5. Read and follow the warnings. Remove the lamp protector and install new lamp.



Troubleshooting Guide

Issue	Possible Cause	Solution
Single lamp flickers.	Lamp is not securely seated in the socket.	Remove and securely reseal lamp.
	Lamp is defective or at the end of its life cycle.	Replace with new lamp.
Row of lamps flicker.	Connection between lamps may be loose.	Check all electrical connections.
Single lamp is out.	Lamp is not securely seated in the socket.	Remove and securely reseal the lamp.
	Lamp is defective or at the end of its life cycle.	Replace with new lamp.
	Lamp socket is broken or defective.	Replace broken lamp socket.
	Ballast is defective.	On most BLU units, one ballast is used to power two lamps; if the ballast is defective, two lamps will fail to illuminate. One ballast can power one lamp also.
Two lamps are out.	On all BLU units, if neither lamp will energize, or if either of the two lamps is 'burned', or improperly seated in the socket, or if the ballast is defective.	<ul style="list-style-type: none"> • Check to ensure both lamps are securely seated in their lamp sockets. • Replace one of the lamps, but do not dispose of the removed lamp. If both lamps fail to energize, replace the second lamp with the lamp removed from the first socket. If both lamps again fail to energize, replace both lamps. If both new lamps fail to energize, check wiring to the ballast. If wiring appears to be OK, replace the ballast.

NOTE: To prevent damage to lamps or sockets, follow lamp replacement instructions carefully. Insert the 4 pin base of the lamp into the lamp socket at an angle then while holding the lamp base in socket, rotate free end of lamp up into the metal lamp clip while at the same time making sure that the free side of the lamp base snaps into the locking tab on the socket. A 'click' will be heard or felt when the lamp is properly seated. Removal is performed by reversing this action.

Always use gloves to avoid surface contamination of the lamp. Always dispose of lamps in accordance with local waste disposal laws. For reference, Philips lamps contain 5mg of Mercury. Ballast replacement requires proper training, tools and skills. DO NOT attempt to secure wiring or replace ballasts without proper knowledge and training to do so.

Parts List

Part	Manufacturer	Part No.	Description
Ballast	Advance	IUV-2S36-M2-LD	Multi voltage 120 thru 277
Sockets	Edwin Gaynor	286-SC	75W 600V
Wire	TEWN	18Ga.	Black, white, green, red, blue, yellow
Fuse	ADL	MDL-10	10A; to 480V; Enclosed Snap-action
Fuse Holder	BUSS	HKP-HH	15A
Lamps	Philips	PL-L 60W TUV, PL-L 95W TUV	
Squeeze Connectors	3M	L501	Drop-down
Toggle Switch	OMRON	085720134	1/4A/250V; 3/4A/125V
Optional 9'-0" Power Cord		E243929	3-Conductor