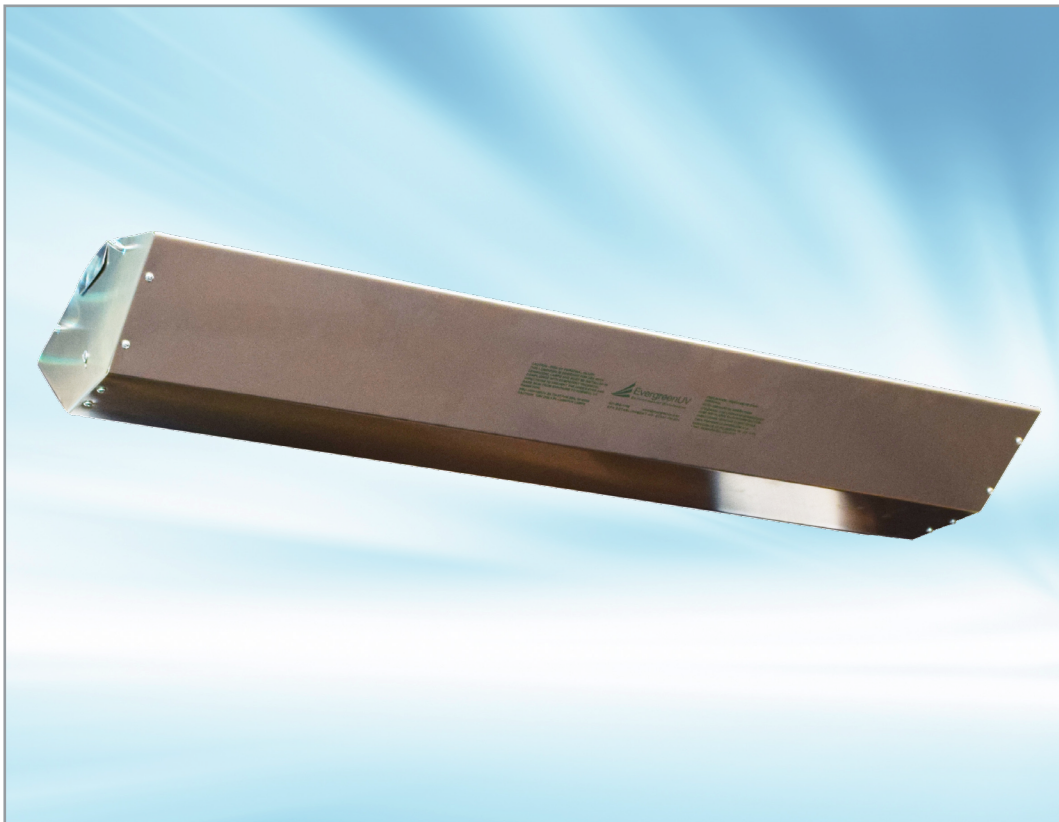




Maintenance • Service • Safety

Recommendations for Lumalier Air and Surface Disinfector GC Series



www.lumalier.com

1931 Thomas Road | Memphis TN 38134 | 901-800-1709
EPA ESTABLISHMENT NO. 91347-TN-001

Revision 1/26/2023

Maintenance

Scheduled Maintenance Procedures

Quarterly – Safely visually inspect lamps from below to insure all lamps are operational.

Semi-Annually – If the lamps show visual dust accumulation, they should be cleaned.

To clean lamps:

- De-energize by switching the ON/OFF switch to the “OFF” position.
- Using soft cotton gloves, remove the lamps from the UV unit.
- Using a soft cotton cloth, with isopropyl alcohol, wipe the lamps and allow to dry.
- Replace the lamps.
- Turn on the exterior toggle switch. Read warnings.
- Inspect the lamps using safety glasses to insure all lamps are energized.

Annually – Replace the lamps.

To replace lamps:

- De-energize by switching the ON/OFF switch to the “OFF” position.
- Remove the used lamps from the UV unit.
- Wearing soft cotton gloves and using a soft cotton cloth, with isopropyl alcohol, wipe the new lamps and allow to dry.
- Install the new lamps.
- Turn on the exterior toggle switch.

Service

Lumalier replacement parts and lamps can be purchased from authorized distributors.

For information call 901-800-1709.

What is UVGI?

UV-C, also known as “germicidal ultraviolet”, **has a specific wavelength of 253.7nanometers (253.7 billionths of a meter)** and is known to deactivate molds, spores and germs contained in tiny airborne droplet nuclei that transmit diseases such as measles, tuberculosis, and

influenza from person to person. With significant penetrating ability, UV-C can penetrate the cell wall of a microorganism and destroy it but it cannot penetrate the outer layer of human skin or the cornea of the eye. Although overexposure may lead to a temporary, minor eye irritation or skin reddening it does not cause serious or long-term health effects.

Safety

Personal Protective Equipment

Employees must wear personal protective equipment whenever UV radiation measurements are being made close to the lamp source in order to document lamp output, or when maintenance procedures must be performed in areas where UVGI systems are activated. Personal Protection Equipment includes:

- Safety glasses with side shields
- Head, neck and face covering opaque to UV radiation
- Soft cotton gloves
- Long-sleeved, tightly woven fabrics with SPF 15 or greater

Reporting UV Exposure

Should any temporary eye or skin irritation that develops after acute exposure to UV radiation one should contact their supervisor or physician.

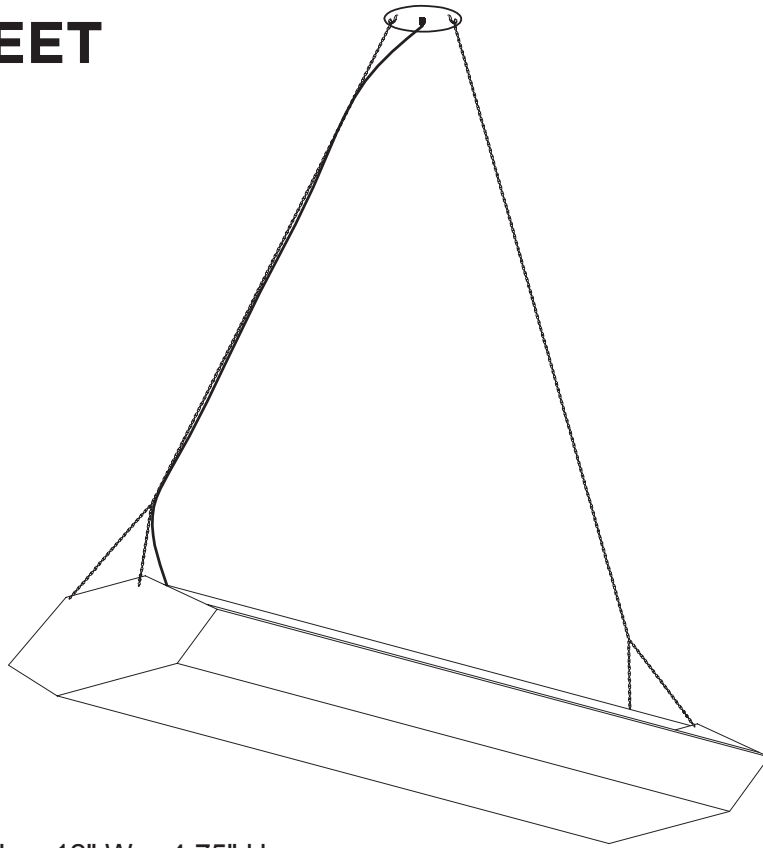
Material Safety Data Sheets (MSDS)

For MSDS sheets on our lamps, please contact your local Lumalier representative.

DATA SHEET

GC-295

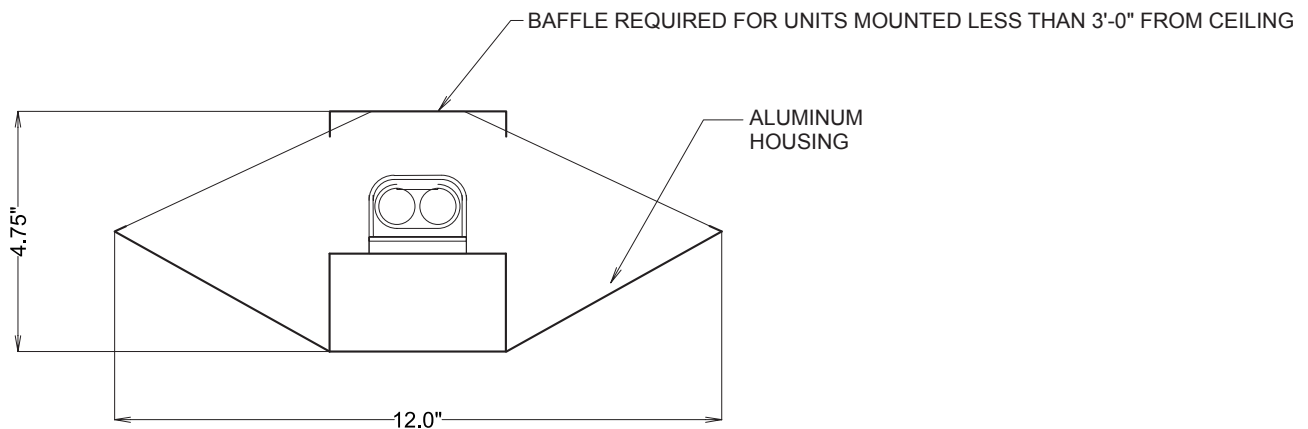
Revision 1/26/2023



DIMENSIONS: 48" L. x 12" W. x 4.75" H.
FINISHES: ALUMINUM HOUSING

ELECTRICAL REQUIREMENTS: 120V/1.0A THRU 240V/0.5A/50-60Hz
LAMP: (2) 95W TWIN TUBE UV
UV WATTS: 54 UV WATTS
UV MICRO WATTS: 3,667

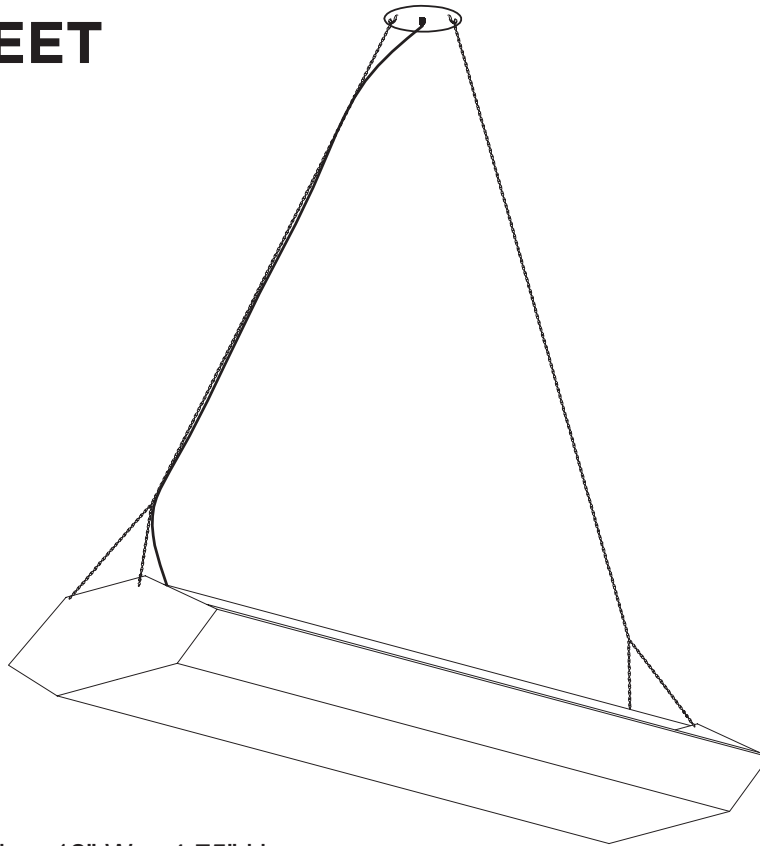
MINIMUM CEILING HEIGHT: 10'-0"
MOUNT NO LOWER THAN 7' 0" ABOVE FINISHED FLOOR.



DATA SHEET

GC-260

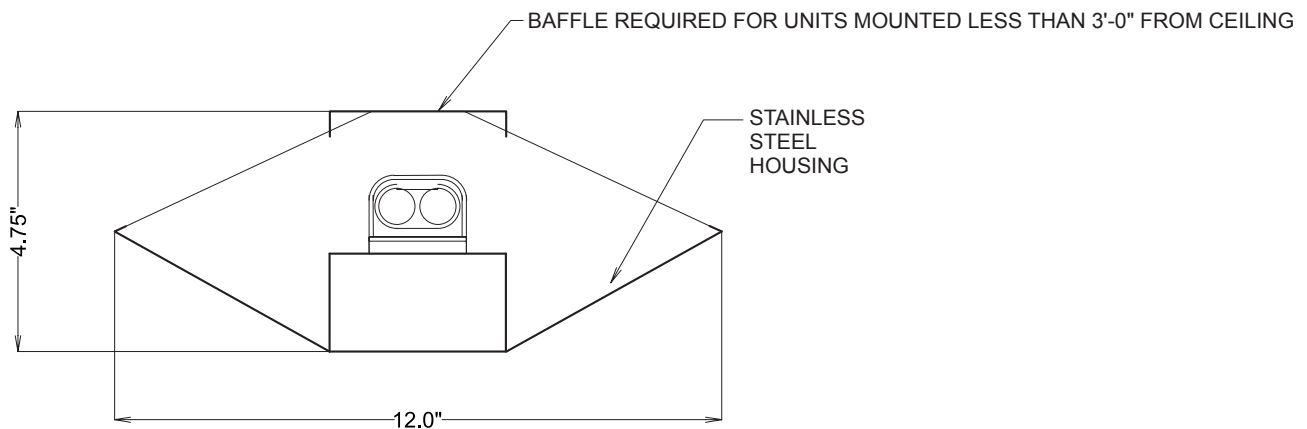
Revision 1/26/2023



DIMENSIONS: 36" L. x 12" W. x 4.75" H.
FINISHES: BRUSHED STAINLESS STEEL

ELECTRICAL REQUIREMENTS: 120V/1.5A THRU 240V/0.75A/50-60Hz
LAMP: (2) 60W TWIN TUBE UV
UV WATTS: 36 UV WATTS
NOMINAL WATTS: 120 WATTS

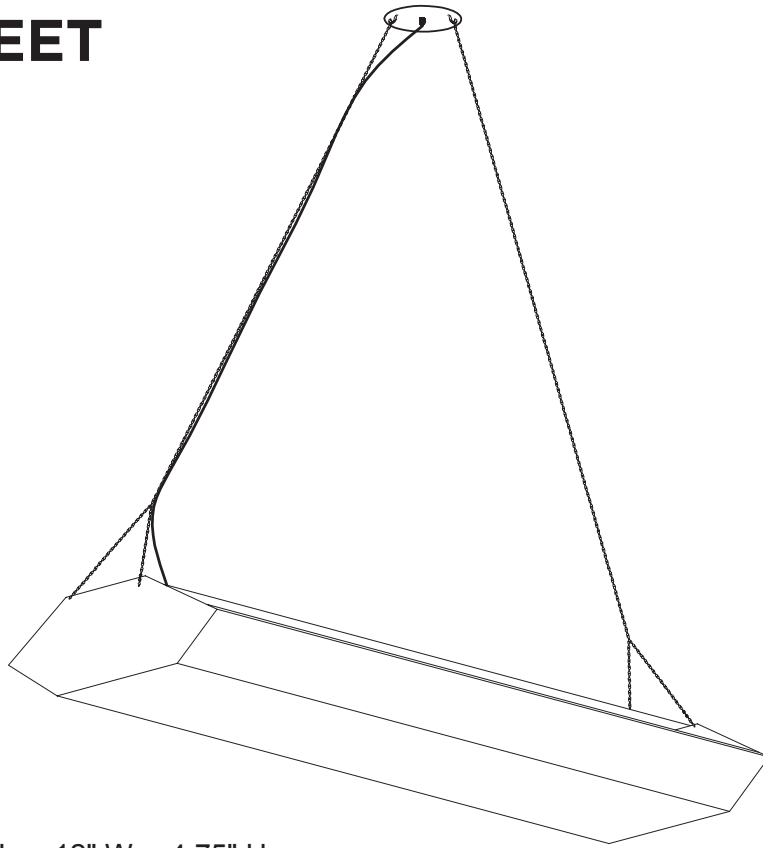
MINIMUM CEILING HEIGHT: 10'-0"
MOUNT NO LOWER THAN 7' 0" ABOVE FINISHED FLOOR.



DATA SHEET

GC-136

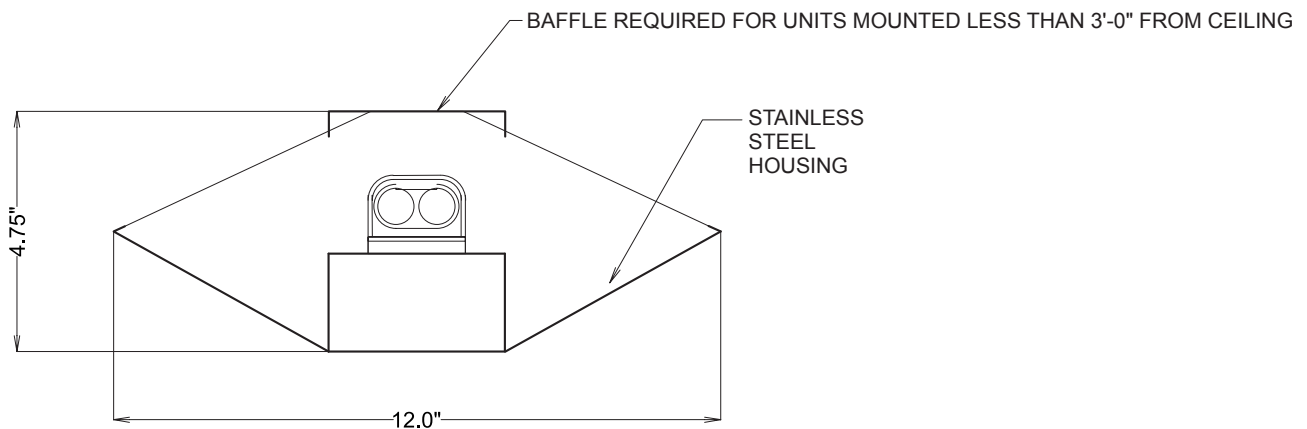
Revision 1/26/2023



DIMENSIONS: 18" L. x 12" W. x 4.75" H.
FINISHES: BRUSHED STAINLESS STEEL

ELECTRICAL REQUIREMENTS: 120V/0.78A THRU 277V/0.33A; 50-60Hz
LAMP: (1) 36W TWIN TUBE UV
UV LAMP WATTS: 12 UV WATTS
NOMINAL LAMP WATTS: 36 WATTS

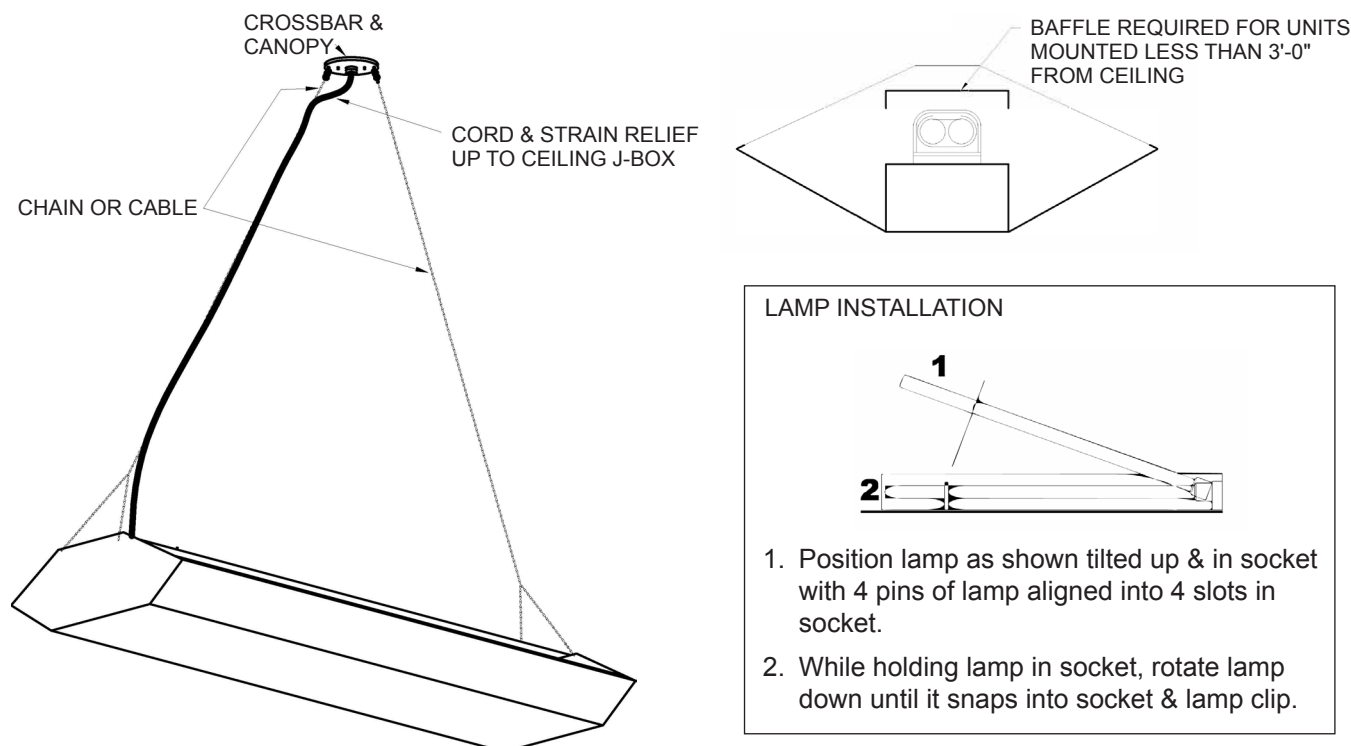
MINIMUM CEILING HEIGHT: 10'-0"
MOUNT NO LOWER THAN 7' 0" ABOVE FINISHED FLOOR.



GC SERIES INSTALLATION INSTRUCTIONS

!! CAUTION !!

THIS UNIT IS DESIGNED FOR USE WITH ULTRAVIOLET LAMPS AND MUST BE INSTALLED IN COMPLIANCE WITH COMPETENT TECHNICAL DIRECTIONS SO THAT USERS' EYES AND BARE SKIN WILL NOT BE SUBJECTED TO INJURIOUS RAYS. DO NOT LET EYES OR BARE SKIN BECOME EXPOSED TO ULTRAVIOLET RAYS EMITTED BY THE UV LAMPS USED IN THIS FIXTURE. DO NOT MOUNT WITH BOTTOM OF FIXTURE BELOW 7'-0" ABOVE FINISHED FLOOR. MINIMUM CEILING HEIGHT REQUIRED FOR THIS FIXTURE IS 9'-0". CEILINGS LESS THAN 10'-0" REQUIRE A LAMP BAFFLE.



If ceiling height is lower than 10'-0" or if fixture is mounted less than 3'-0" from ceiling, baffle is required. Installation & removal of baffle is done so by screwing or unscrewing screws from each end of baffle. Lamp fixture, read caution, re-energize fixture.

1. Disconnect power to fixture location.
2. Insure that the mounting structure will safely support the weight (40lbs.) of the entire fixture so that no future or immediate damage will occur to persons or property. Mount fixture no less than 9'-0" from bottom of fixture to finished floor. Install crossbar to ceiling j-box with the crossbar screws pointing down. (crossbar mounting screws not included)
3. Raise fixture up & make wiring connections as per the National Electrical Code and local code. All electrical work to be performed by a licensed electrician. Fixture color code: black = power, white = neutral, green=ground.
4. Install canopy onto crossbar screws, and attach chain/cable sets as shown above.
5. WITH THE POWER OFF, lamp fixture with PL-L TUV twin-tube UV lamps, & read caution. Use cotton gloves provided to handle lamps. Touching lamps with bare hands does not effect lamp life. Residue left on lamps can reduce UV output. Clean dirty lamps with isopropyl alcohol & soft cloth. Read caution & test fixture.