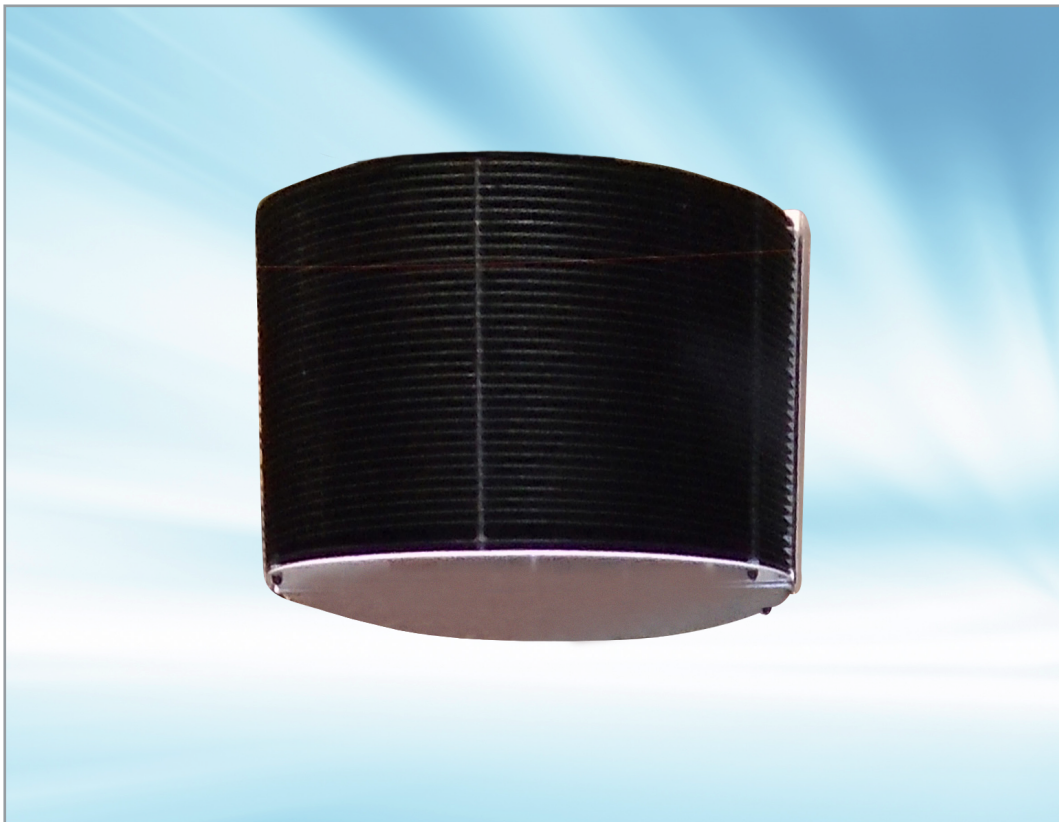




Maintenance • Service • Safety

Recommendations for Lumalier Air and Surface Disinfector
PM Series



www.lumalier.com

1931 Thomas Road | Memphis TN 38134 | 901-800-1709
EPA ESTABLISHMENT NO. 91347-TN-001

Revision 1/26/2023

Maintenance

Scheduled Maintenance Procedures

Quarterly – Read warnings. Wearing safety glasses, visually inspect lamps through the louver assemblies. Insure all lamps are operational.

Semi-Annually – If the lamps show visual dust accumulation, they should be cleaned.

To clean lamps:

- De-energize by switching the toggle switch to the “OFF” position.
- Remove the louver assemblies.
- Using soft cotton gloves, remove the lamps from the UV unit.
- Using a soft cotton cloth, with isopropyl alcohol, wipe the lamps and allow to dry.
- Replace the lamps.
- Reinstall the louver assemblies.
- Read warnings. Turn on the exterior toggle switch.

Annually – Replace the lamps.

To replace lamps:

- De-energize by switching the toggle switch to the “OFF” position.
- Remove the louver assemblies.
- Remove the used lamps from the UV unit.
- Wearing soft cotton gloves and using a soft cotton cloth, with isopropyl alcohol, wipe the new lamps and allow to dry.
- Install the new lamps.
- Reinstall the louver assemblies.
- Turn on the exterior toggle switch.

Service

Lumalier replacement parts and lamps can be purchased from authorized distributors.

For information call 901-800-1709.

What is UVGI?

UV-C, also known as “germicidal ultraviolet”, **has a specific wavelength of 253.7nanometers (253.7 billionths of a meter)** and is known to deactivate molds, spores and germs contained in tiny airborne droplet nuclei that transmit diseases such as measles, tuberculosis, and influenza from person to person. With significant penetrating ability, UV-C can penetrate the cell wall of a microorganism and destroy it but it cannot penetrate the outer layer of human skin or the cornea of the eye. Although overexposure may lead to a temporary, minor eye irritation or skin reddening it does not cause serious or long-term health effects.

Safety

Personal Protective Equipment

Employees must wear personal protective equipment whenever UV radiation measurements are being made close to the lamp source in order to document lamp output, or when maintenance procedures must be performed in areas where UVGI systems are activated.

Personal Protection Equipment includes:

- Safety glasses with side shields
- Head, neck and face covering opaque to UV radiation
- Soft cotton gloves
- Long-sleeved, tightly woven fabrics with SPF 15 or greater

Reporting UV Exposure

Should any temporary eye or skin irritation that develops after acute exposure to UV radiation one should contact their supervisor or physician.

Material Safety Data Sheets (MSDS)

For MSDS sheets on our lamps, please contact your local Lumalier representative.

1. Disconnect power to mounting location. Remove the louver assemblies by unscrewing the wing nuts ONLY on the stainless steel bottom cover. Then remove the top wing nut , lift up & remove louver assembly.



2. With assistance, raise the fixture frame up to ceiling j-box and install the yoke to it. Mounting screws by others. INSURE THAT THE CEILING J-BOX WILL SUPPORT AT LEAST 35 POUNDS. Insert the hanger ball on the fixture stem into the yoke & allow the fixture to hang free.



3. Make-up wiring connections. Note: A qualified, licensed electrician is to do all electrical connections. All connections are to be as per the NEC (National Electrical Code) and all local codes.

Fixture wire color code is:

Black = power (hot)

White = neutral

Green = ground



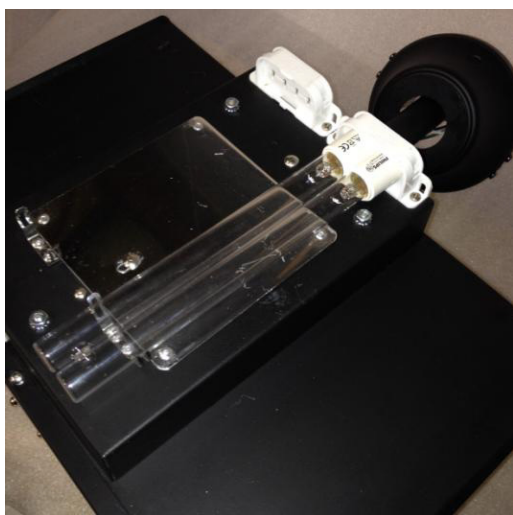
4. After wiring is complete, raise canopy up to yoke and secure it to yoke.



5. Lamp fixture with the PL-L18WTUV lamps provided.



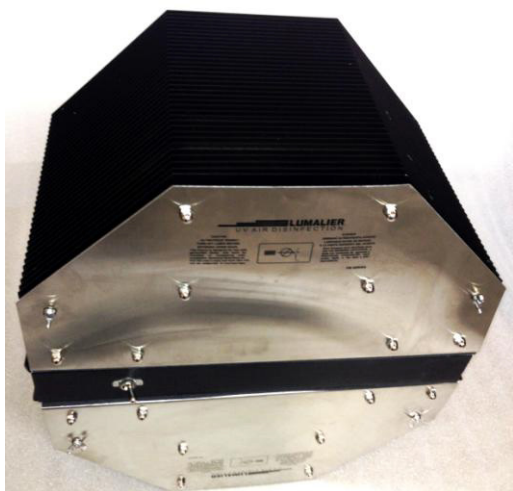
6. Insert lamps at an angle with the four pins on lamp base in the four slots in lamp socket. Firmly hold lamp in socket & swivel lamp down into the lamp clip. Lamp will snap into socket. Note of caution. DO NOT bypass white safety switch on fixture bottom nor push it without louver assemblies in place if power is turned on to fixture. See below.



7. Reinstall louver assemblies.



8. Reinstall stainless steel bottom cover.



9. Turn power on to fixture and test lamps. A constant blue glow should be seen on both sides of fixture.

DO NOT look directly at lamps because temporary reddening of skin and eye irritation will occur. UV protective measures should be taken if it is necessary to be directly exposed to UV radiation. Safety glasses should be worn and skin should be covered.